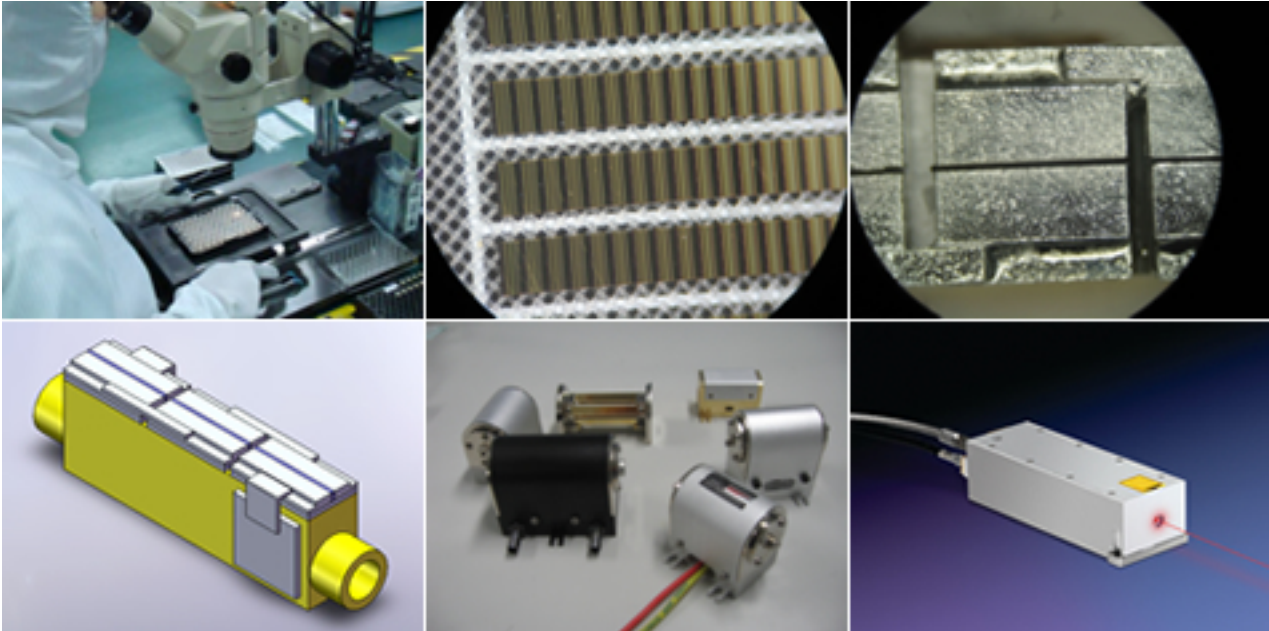


Sino-Laser (Beijing) Inc.

Oct 6th, 2008



Sino-Laser (Beijing) Inc, is a young laser research lab established in 2007. Our main job is high power diode laser research & high power DPSS laser system design for economic industrial applications. Our solutions offer a competitive advantage in performance, reliability and efficiency.

Sino-Laser (Beijing) Inc. has a facility of 5,000 square feet of class 10K clean room & class 100 local clean zone (according to Federal Standards 209E). Sino-Laser has full product lines of GaAs wafer processing (still being prepared), chemical processing, dielectric coating, GaAs cleaving, laser diode mounting, diode & DPSS laser testing & integrating and etc.

Sino-Laser was founded by former senior engineers & researchers from US diode laser manufacturers & academy institutes. With China advantages of human resources and strict manufacture management, Sino-Laser is pleased to offer a wide range of diode laser & DPSS laser products to global users with stable quality & competitive price.

Contacts

Address: 2F, Jia 2 Building, Xihongmen Road 26, Daxing District

City: Beijing, China, PRC

Postal Code: 100076

Fax: 0086-10-60299801

Tel: 0086-139-1096-2029

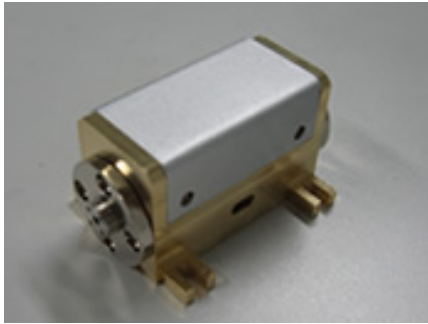
Contact: Dr. Li Yang (Tony)

Email: sales@sino-laser.com

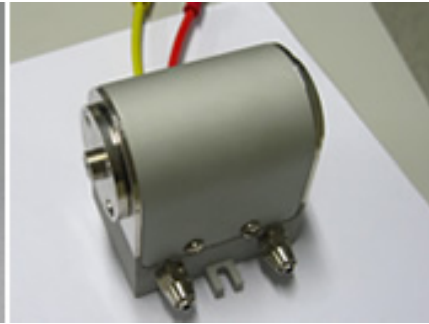
<http://www.sino-laser.com>

www.sino-laser.com

DPSSL Module Specifications (GN Series, CW DPSS Laser Module)



GN20 ↗



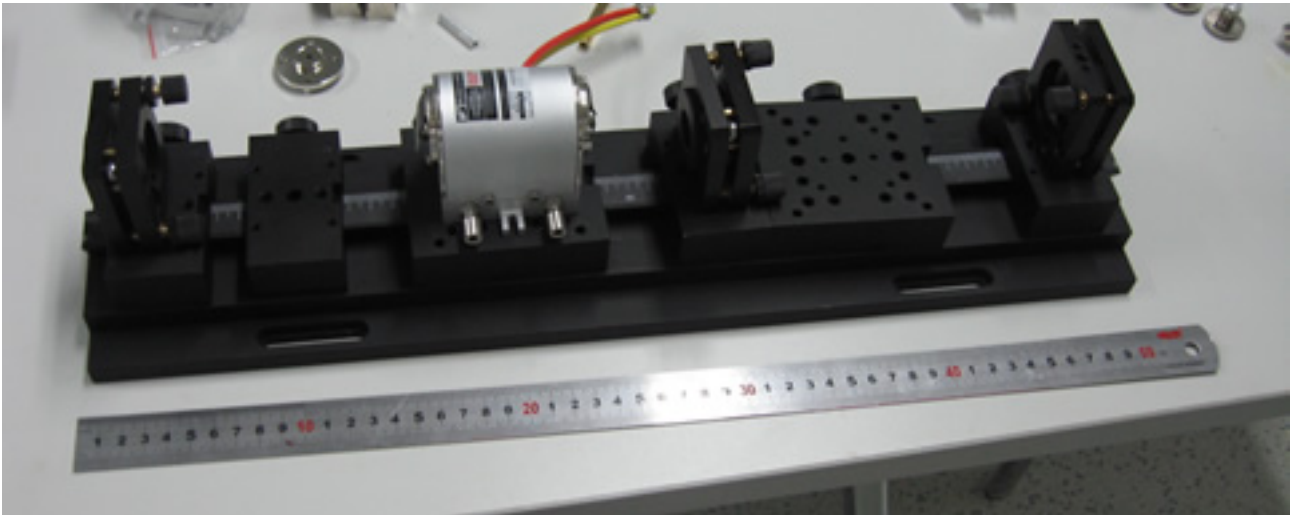
GN35 / GN 50 ↗



GN75 / GN100 ↗

Module No.	GN20	GN35	GN50	GN75	GN100	Unit
Central Wavelength	1064					nm
Typical Output Power	20	35	50	75	100	W
Typical Operating Current	20	20	20	30-35	30-35	A
Typical Operating Voltage	<12	<18	<18	<24	<30	V
Threshold Current	≈ 12					A
Nd:YAG Diameter	2	2	3	3	3	mm
Nd:YAG Length	65	65	65	75	90	mm
Nd:YAG Center Height	17	40	40	45	45	mm
Nd:YAG Doping	0.6%					-

1. Minimum 1064 nm multi-mode output in a short cavity (165 ± 5 mm, 0.75mCC HR / Flat 80%R OC)
2. Expected lite time is around 10,000 hours.
3. Other doping level can be customized according to request.
4. Other DPSS laser modules can be customized according to specific requirements.
5. QCW / Plused modules available.
6. Warranty: 13 months.

Beam Mode Testing**Testing Data:**

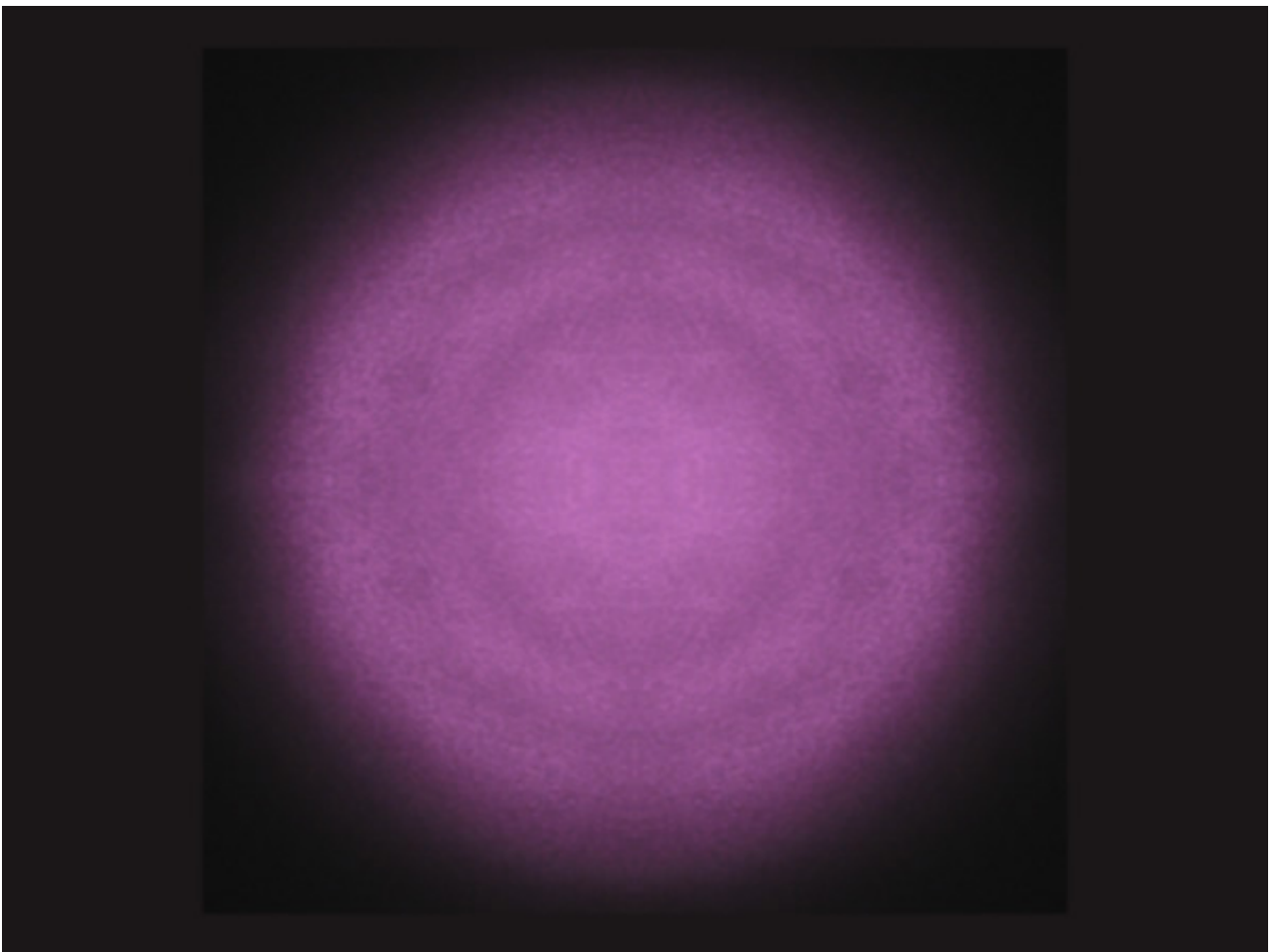
GN50 Module Rated at 50W Output, No aperture.

Cavity Length: 400mm

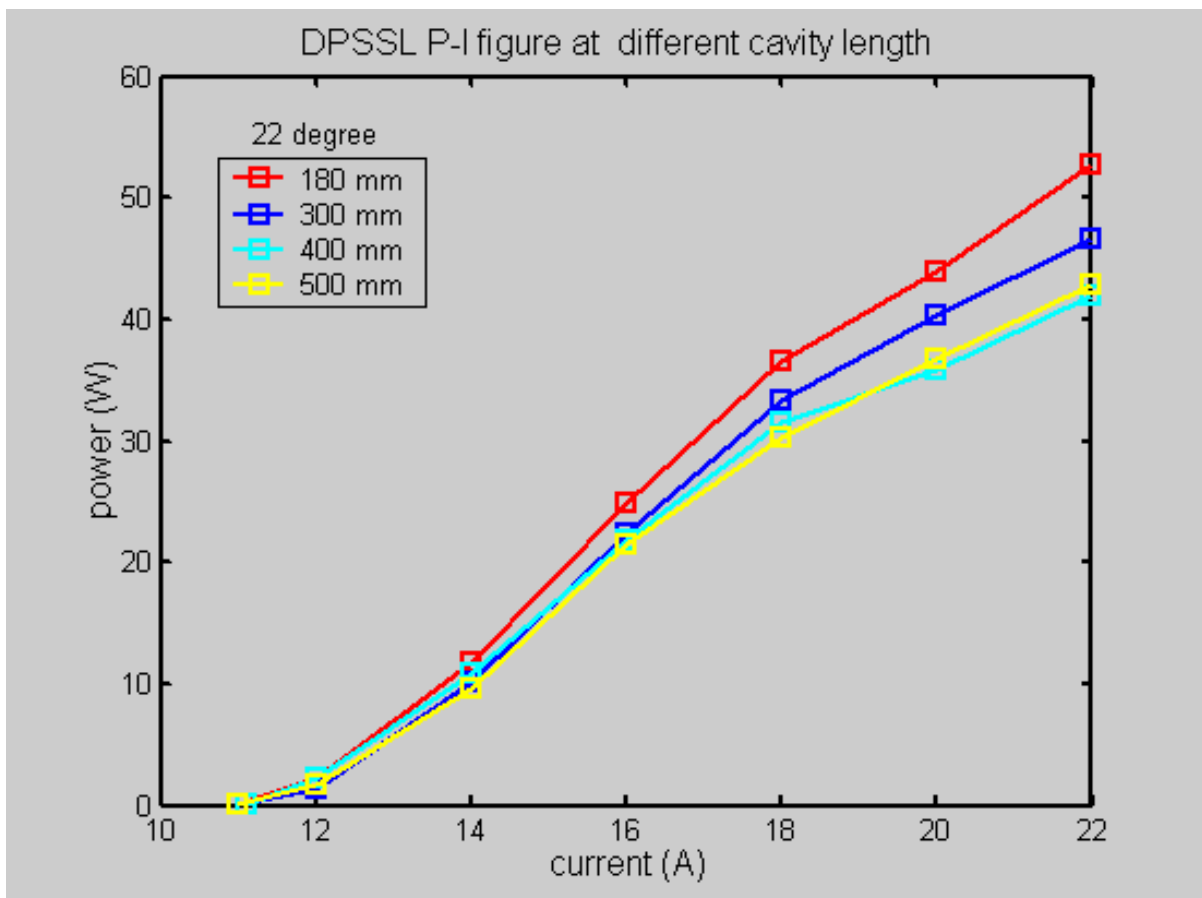
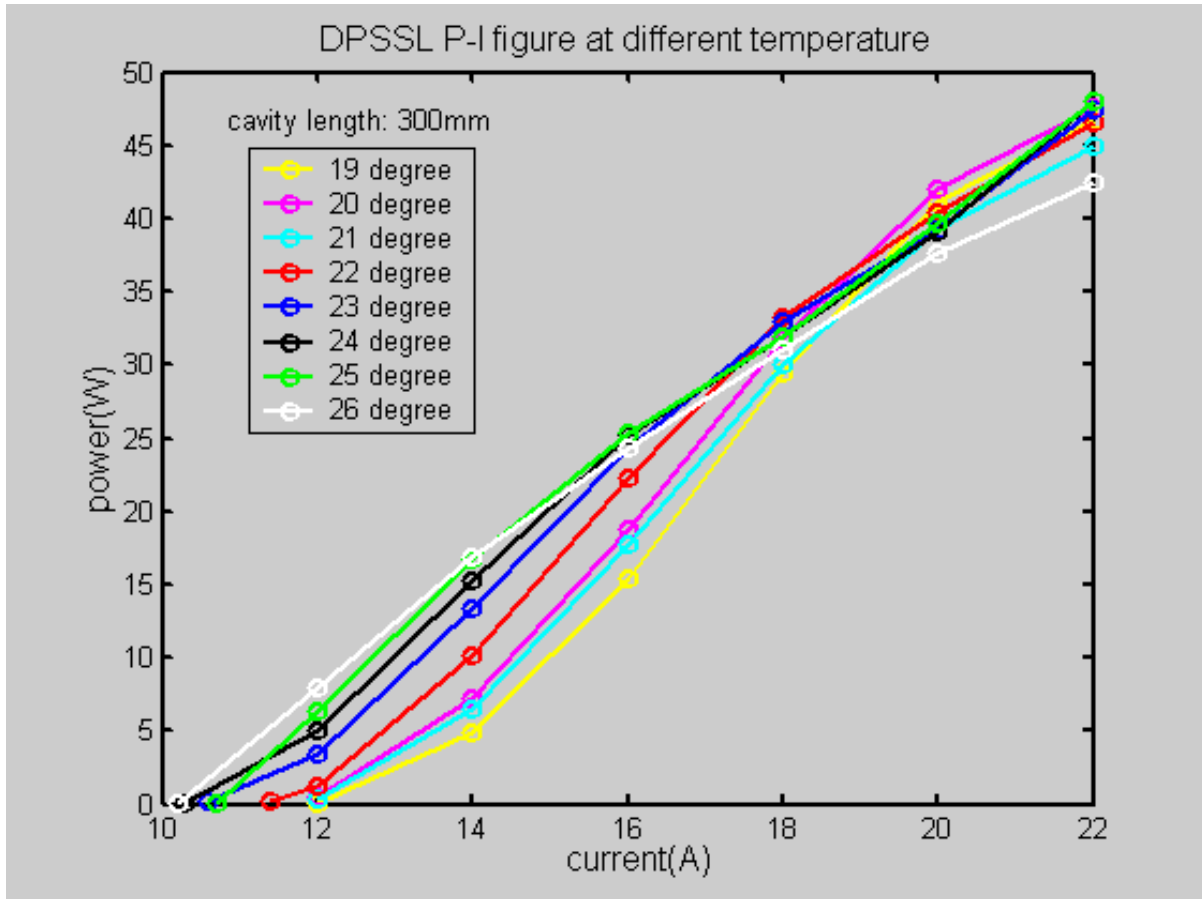
Beam Diameter: 3mm

Beam Mode: TEM₀₁, Regular Concentric Circles (as shown below)

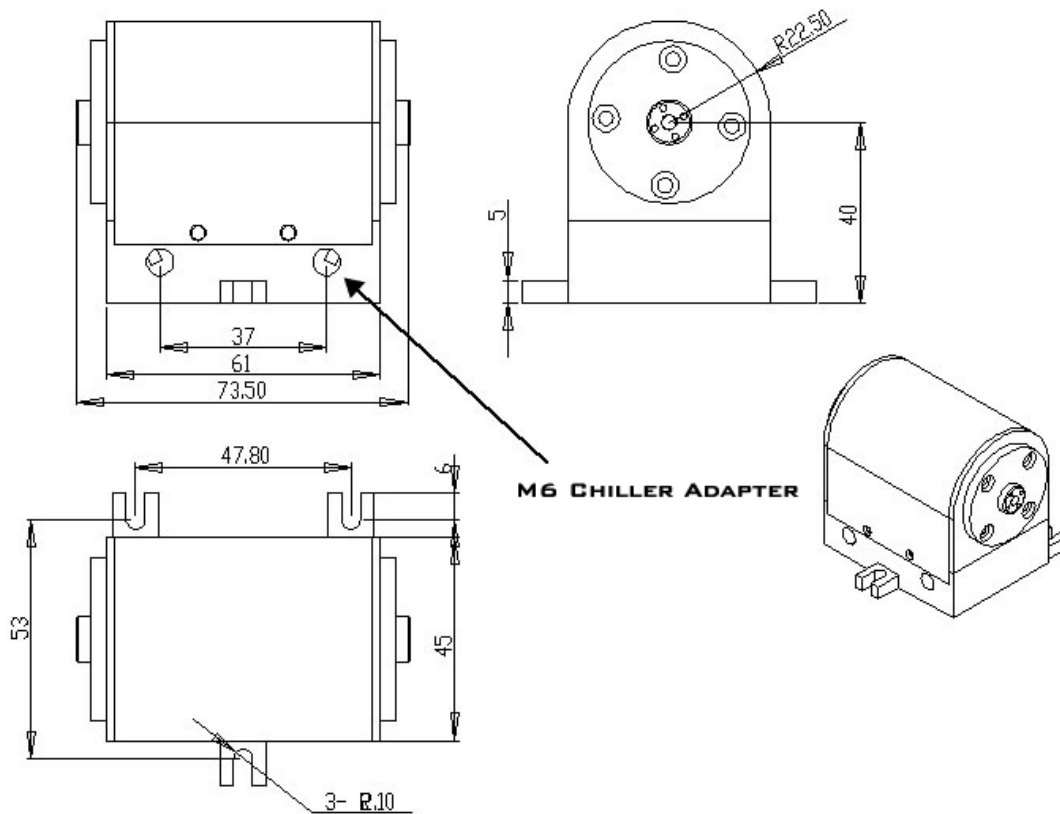
Beam Divergence: around 6mrad



GN50 Series Typical Testing Data



GN50 Series Dimensions:



GN100 Series Dimensions:

